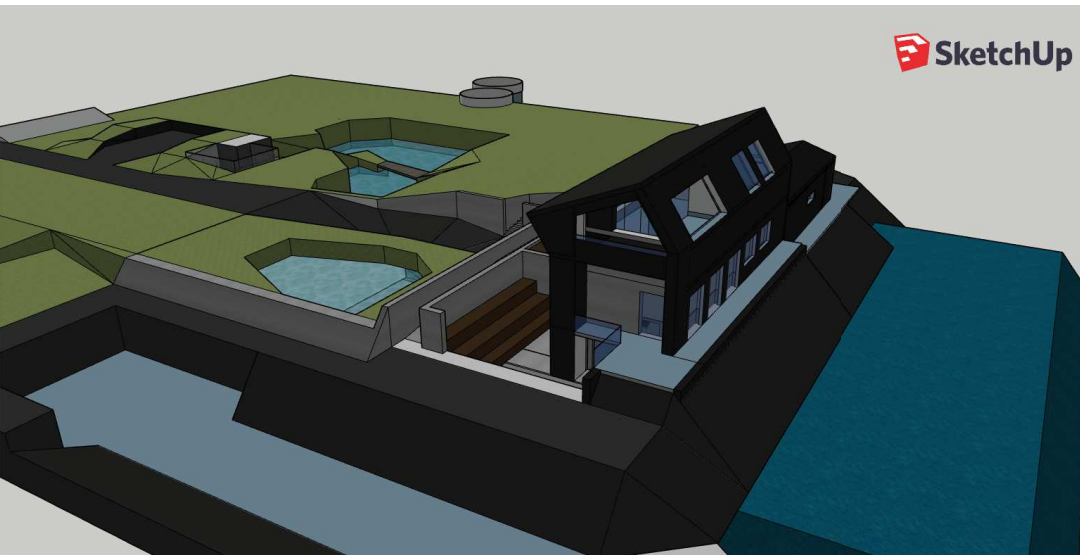


STRÖND - conversion of a former fishfarm to a workshop / residence



SketchUp



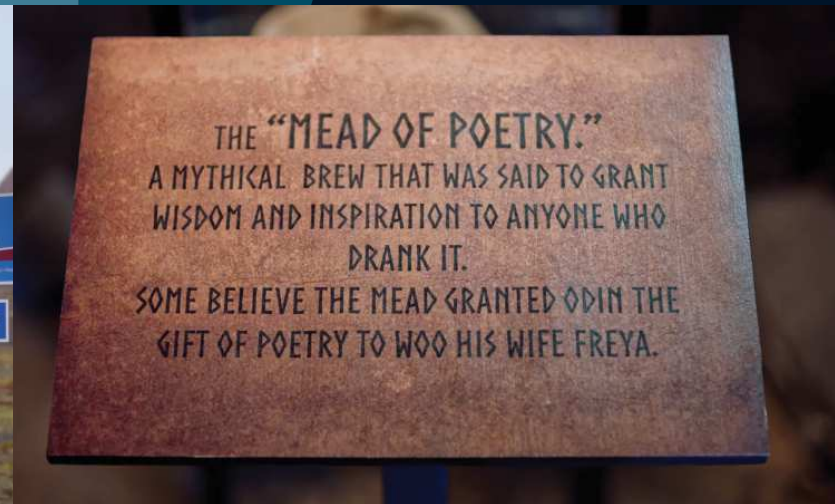
SketchUp



Frieda Roolf
Freelance Designer - Iceland

Not meant to host anything without gills, did my boyfriend and I take up the challenge to convert this bunker by the sea. It featured one window, separate rooms for generator and staff and basins for fish breeding.

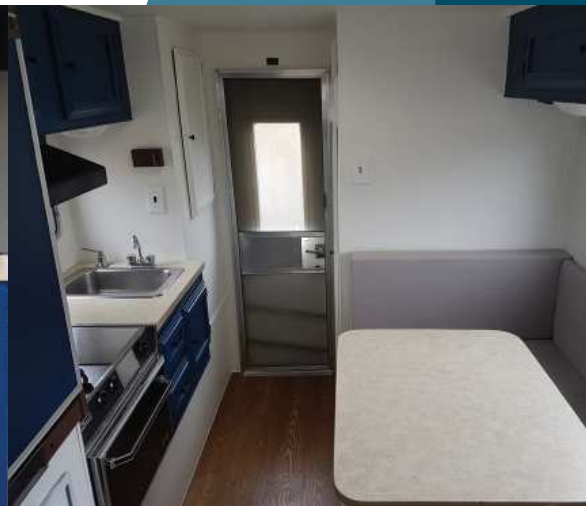
LOVE ON ICELAND - Graphic Designer for a Hallmark channel movie production



Frieda Roolf
Freelance Designer - Iceland

I created various signs, posts, book covers, book pages, logos and digital artwork (including the use of my own photo stock).

Waterproofing, repair and refurbishment of a **1981 Coachmen „Casper xl 850“ Pick-up camper**



Frieda Roolf
Freelance Designer - Iceland

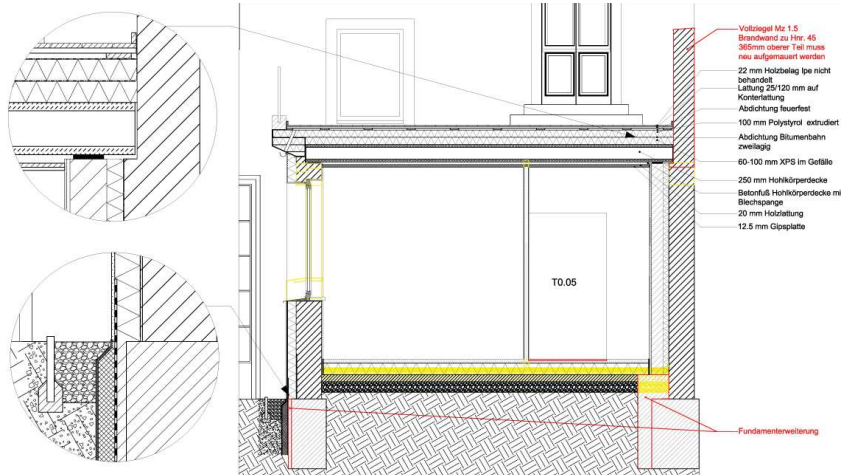
The camper was in a derelict state, with water leakages outside and oil penetration in the inside. The interior was in need of a fresh-up, both visual and functional. The exterior was adjusted to climate needs.

SKETCHES, DRAWINGS & PAINTINGS



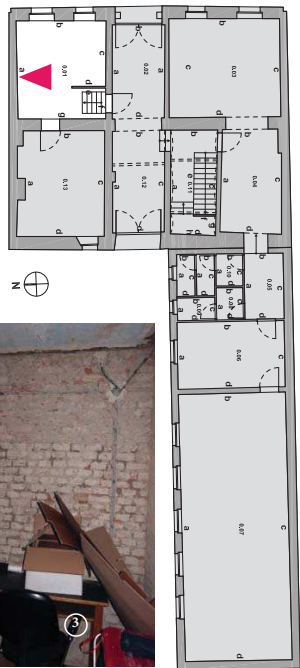
Frieda Roolf
Freelance Designer - Iceland

These drawings and paintings were mostly produced in 2018, to make sure I can still hold a pen and brush. The castle is an older work of 2010

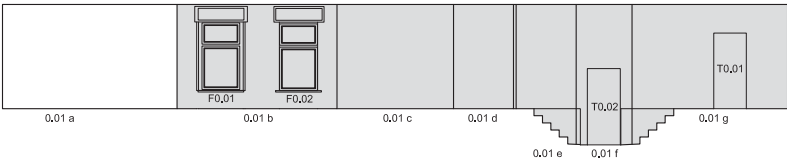


MASTER THESIS - M.Eng Building Conservation (2016)

OBJEKT	Heinersdorfer Straße 44, 13086 Berlin
BAUHERREN	Benjamin Tyrrell & Jan Dieckmann
RAUM	0.01
BEREICH	Wand a
DATUM	26.11.2015



Pos	Bestand / Ausstattung	Zustand
01	Putz	
02	Mauerwerk	unterschiedliche Mörtel
03	Steinersatz mit Kalkstein und Hochlochziegeln	
04	Holzwohleplattenreste	
05	Unterputzkabel	
06	Holzklötz	



FH Potsdam Masterthesis WS 2015/16

OBJEKT	Heinersdorfer Straße 44, 13086 Berlin
BAUHERREN	Benjamin Tyrrell & Jan Dieckmann
RAUM	3.01
BEREICH	Vollgespärre 01 (Südwand)
DATUM	15.11.2015



Lage	Position	Baumangel
01_A	Dachbalkenanschluss Stiel Deckenbalken	Fäuleschäden am Auflagerpunkt durch Eintritt von Feuchtigkeit, Tragfähigkeit fragwürdig Stiel und Kopfband entfernt, behelfsmäßig mit Latte „ersetzt“, vermutlich Resultat des selben Feuchteschadens. 60cm Balken fehlen über die halbe Tiefe des Balkens, vermutlich Resultat des selben Feuchteschadens, Anlaschung übernimmt Kraft
01_C	Firstanschluss	First ruht auf zwei Mauersteinen, die wiederum auf dem ehemaligen Schornstein aufliegen, Tragfähigkeit fragwürdig Sparren nicht durchgängig und mit Latte und diversen Wechslern ersetzt
01_D	Stuhlwandanschluss	Maueranker verbogen und verrostet, Bewegung des Dachstuhls nach Westen
01_E	Deckenbalkenanschluss	Deckenbalken mit weiterem Sparrenstück aufgedoppelt um den Kraftschluss der diagonalen Strebe herzustellen



01_A Dachbalkenanschluss



01_A fehlender Stiel



01_A Deckenbalkenanschluss



01_C Firstanschluss



01_D Stuhlwandanschluss



01_E Deckenbalkenanschluss

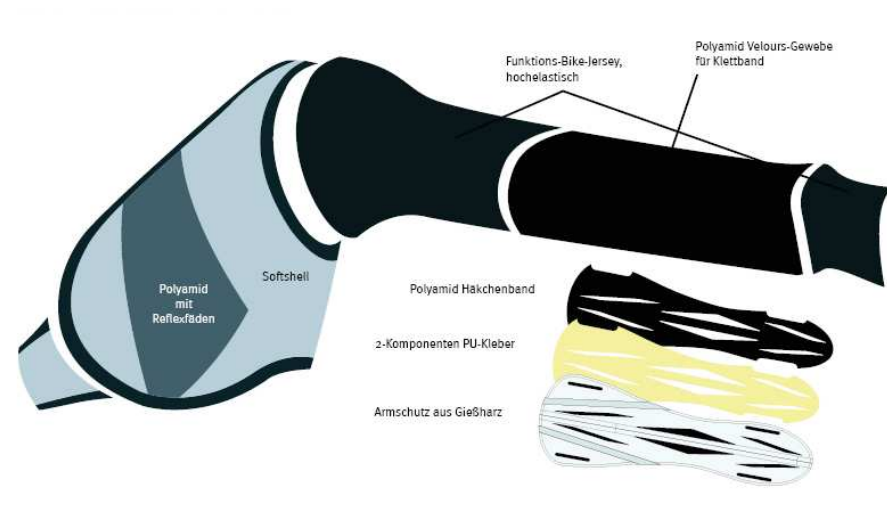
FH Potsdam

Masterthesis WS 2015/16

Frieda Roolf
Freelance Designer - Iceland

of the house, that had lost the entire charm of its architects drawings. After completing my work the advised strengthening of the foundation and thus insulation were executed.

ARMADA - Archery protector for chest and forearm



Frieda Roolf
Freelance Designer - Iceland

While I got introduced to archery, I was facing a lack of quality protectors, to avoid unnecessary bruises along the forearm. I designed, 3-D plotted and casted a prototype, that could also be worn with my chest protector.

TEXTILE ART - laser, screenprint, sewing & velvet devoré



Frieda Roolf
Freelance Designer - Iceland

During my work for numerous stage and movie productions I designed and executed different artworks. On this slide - laserings for Peter Pan, sheep costumes for an opera and fabrics for „The Grand Budapest Hotel“.

THE MONUMENTS MEN - set dressing and set graphics



Frieda Roolf
Freelance Designer - Iceland

For the 2014 feature film, directed by George Clooney, I was painting, ageing and dressing multiple sets.

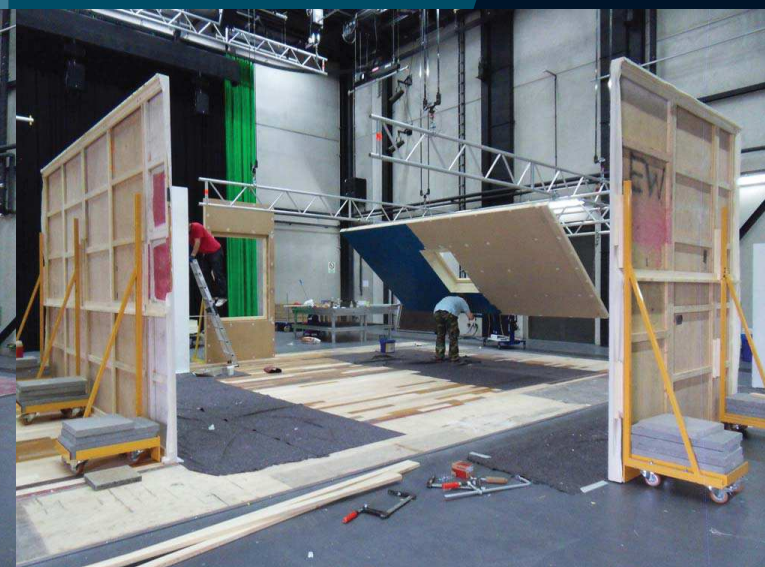
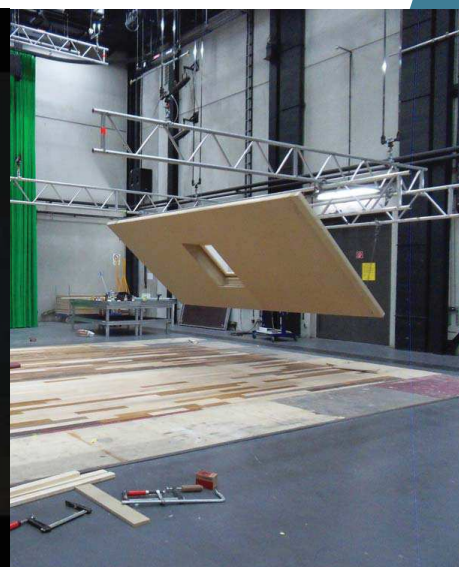
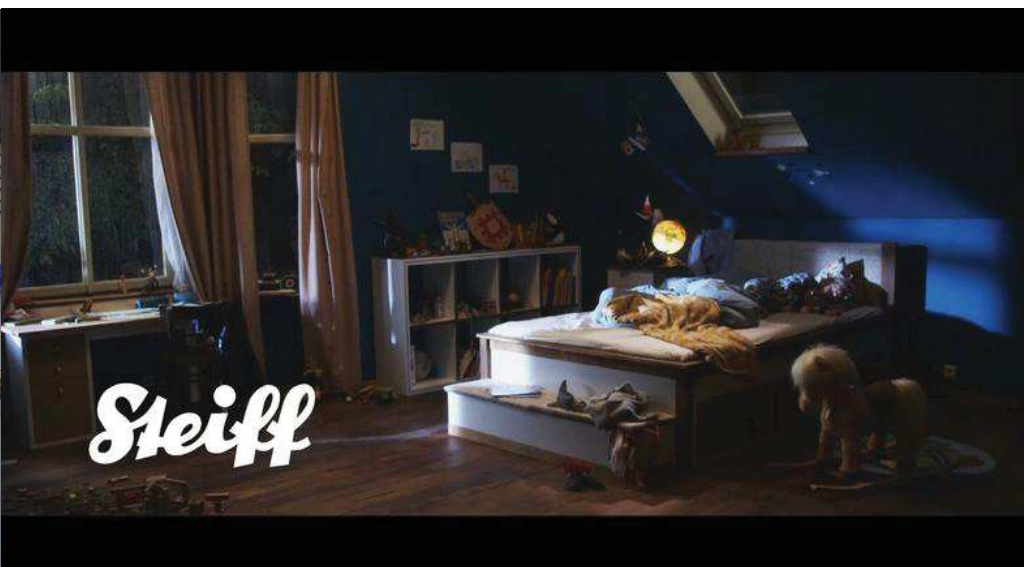
LA BELLE ET LA BETE - set dressing and set graphics



Frieda Roolf
Freelance Designer - Iceland

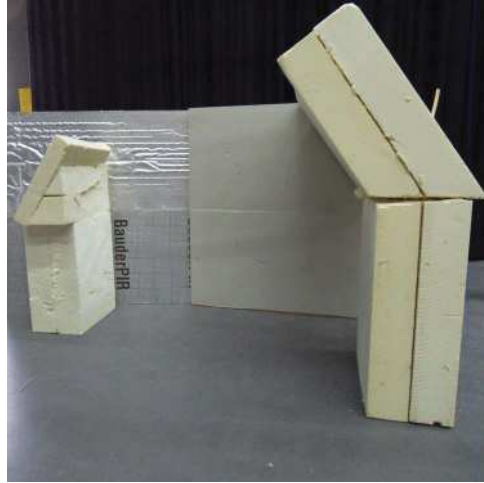
For the 2014 feature film, directed by Christophe Gans, I was designing a 14m dinning table (suitable for stunt action), dressed flower arrangements, sets and created a backrest for belle's bed, curtains and a flag.

STEIFF COMMERCIAL - Production Design, Set Decoration & Construction



Frieda Roolf
Freelance Designer - Iceland

For the 2012 commercial, directed by Denis Parchow, I was assigned to design and execute a child's room. Special features was a height adjustable bed for puppeteers, a sfx window for a stunt, rain outside the window,



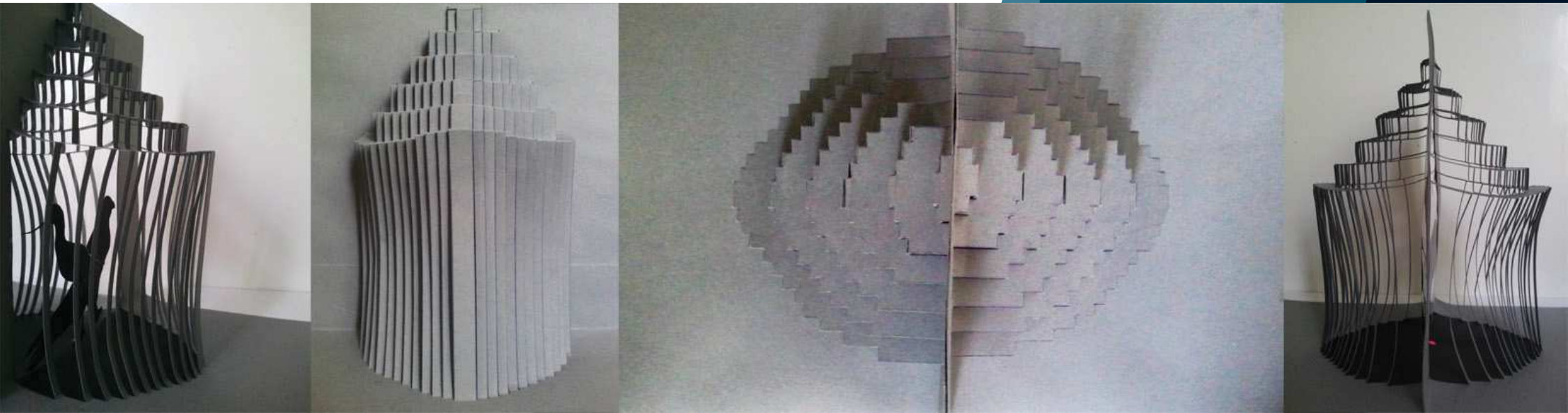
POP-UP-BOOK - Miss Peregrine's home for peculiar children



Frieda Roolf
Freelance Designer - Iceland

As a supporting feature for my application of the Tim Burton film version of „Miss Peregrine's home for peculiar children“ I created a five page pop-up-book

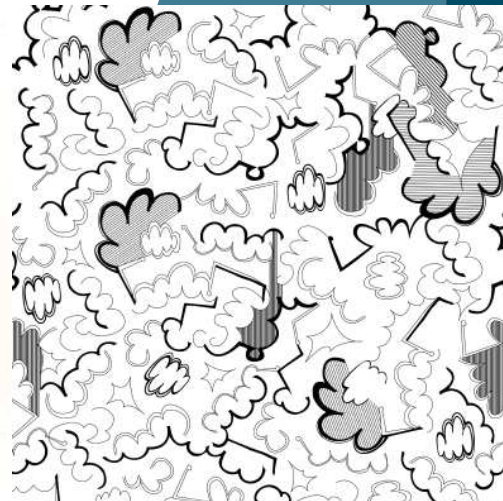
POP-UP-BOOK - Miss Peregrine's home for peculiar children



Frieda Roolf
Freelance Designer - Iceland

The motives show the house of the grandfather with monster in the nearby forest, a birdcage, the orphanage, the rowboat ride and the submarine (the latter are not displayed here)

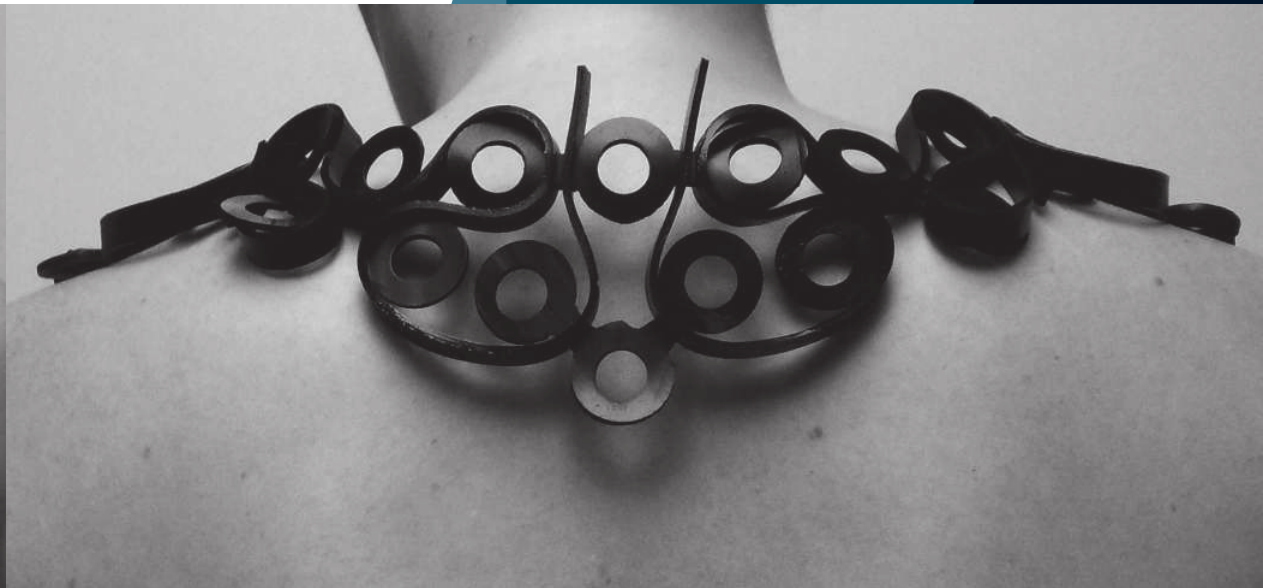
CLOUD ATLAS - Costumer (Stunt), Textile Graphics, Props Graphic



Frieda Roolf
Freelance Designer - Iceland

For the 2012 feature film, directed by the Wachowski siblings & Tom Tykwer, I created several textile graphics. Working for both director teams was especially challenging.

RECYCLE JEWELRY & TRIVET



Frieda Roolf
Freelance Designer - Iceland

No glue was used to create these tyre tube pieces of art. I used altered hollow punches, to create different elements, that were plugged into one another.